

Race to the Finish Line: Increasing Efficiency with an Interactive Data Reporting System

Eric Atchison

MAIR 2013

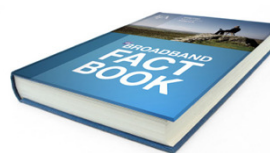
Mississippi Institutions of Higher Learning



Brief History of Data Reporting

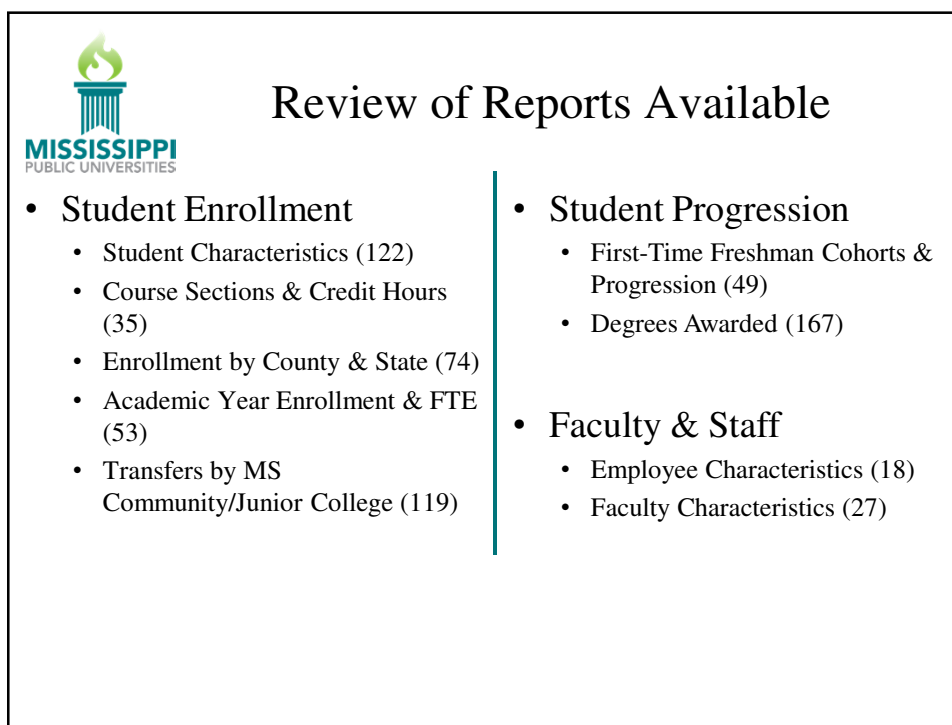
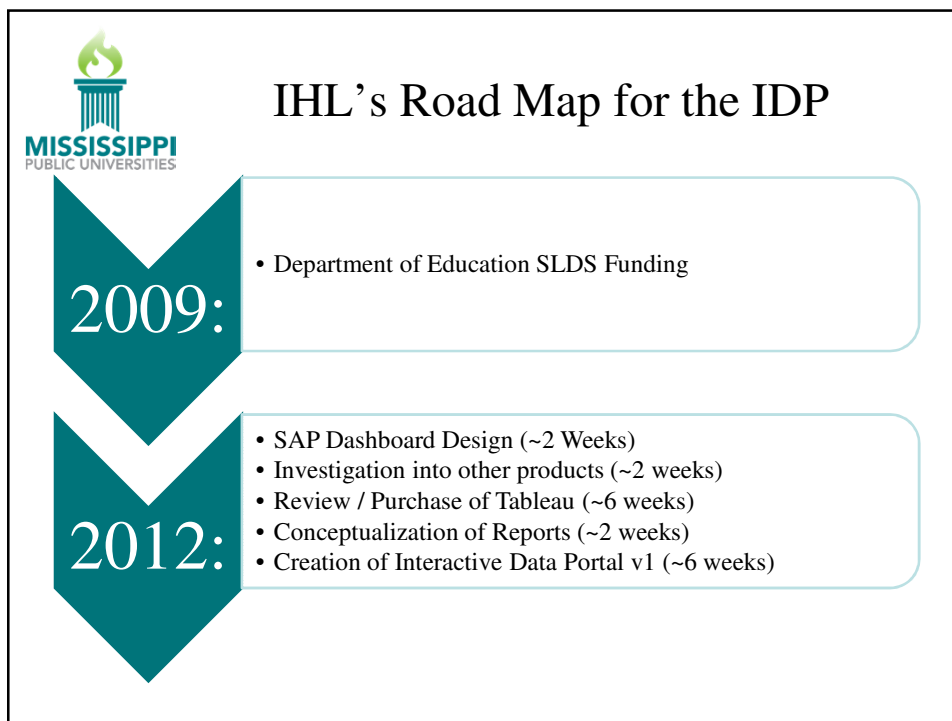
- Reporting
 - Paper-Based (costly)
 - Online (but static)

- Analytics
 - Visualize Trends
 - Interactive



The screenshot shows the 'Fact Books' page on the University of Nebraska-Lincoln website. It features a navigation menu with 'Home', 'Institutional Research', 'Campus Planning and Space Management', 'Examination Services', and 'Forms'. The main content area includes a 'Current Fact Book' section for the 2012-2013 period (8 MB, 131 pgs) and an 'Award History' section. A 'Previous Fact Books' table lists various years and page counts.

Year	File Size	Page Count
2011-2012	3 MB	130 pgs
2010-2011	3 MB	110 pgs
2009-2010	3 MB	95 pgs
2008-2009	3 MB	93 pgs
2007-2008	4 MB	92 pgs
2006-2007	3 MB	92 pgs
2005-2006	4 MB	90 pgs
2004-2005	3 MB	81 pgs
2003-2004	4 MB	70 pgs
Prior Factbooks Selected Data (2002-1998)	3 MB	114 pgs





The IHL Interactive Data Portal

<http://www.mississippi.edu/research/idp.html>



Questions?

Tableau Website:

<http://www.tableausoftware.com/>

Contact Information:

Eric Atchison

601-432-6288

eatchison@mississippi.edu

www.mississippi.edu/research/idp.html